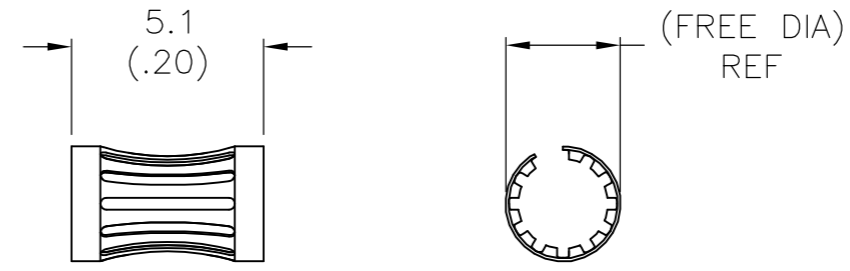
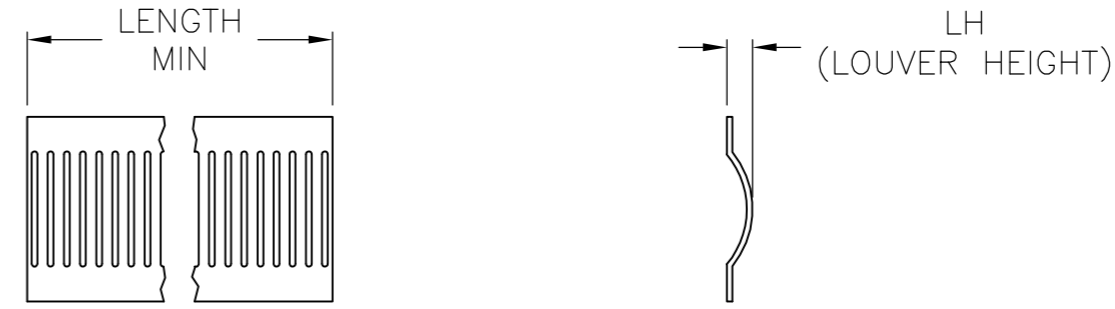


THIS DRAWING IS UNPUBLISHED. RELEASED FOR PUBLICATION
 © COPYRIGHT - By - ALL RIGHTS RESERVED.

LOC		DIST		REVISIONS			
FT	0	P	LTR	DESCRIPTION	DATE	DWN	APVD
		U		REVISED PER ECO-15-012365	17NOV2015	NK	MZ



STYLE A
(FEMALE)



STYLE C
(STRIP)

STYLE	(FREE DIA)	LH	LENGTH	MAT'L (NOTE)	MATING PIN	φ REF	PLATING NOTE NO.	NUM LOUV	MAT'L THK	REF	PART NO.	
A	[.83]	[.022]	--	12	19	[.750]	3-2	82	0.12	[.005]	05043 5-192046-0	OBSOLETE
A	[.83]	[.022]	--	12	19	[.750]	UNPL	82	0.12	[.005]	05115 4-192046-9	OBSOLETE
A	[.76]	[.022]	--	12	16.8	[.660]	UNPL	75	0.12	[.005]	05141 4-192046-8	OBSOLETE
A	[.73]	[.016]	--	13	15.9	[.625]	3-2	71	0.12	[.005]	05175 4-192046-7	OBSOLETE
A	[.73]	[.018]	--	12	15.9	[.625]	4-2	71	0.12	[.005]	05174 4-192046-6	OBSOLETE
A	[.73]	[.022]	--	12	15.3	[.602]	3-2	67	0.12	[.005]	05049 4-192046-5	OBSOLETE
A	[.73]	[.022]	--	12	15.2	[.600]	UNPL	67	0.12	[.005]	05065 4-192046-4	OBSOLETE
A	[.73]	[.018]	--	12	14.8	[.584]	3-2	65	0.15	[.006]	05022 4-192046-3	OBSOLETE
A	[.70]	[.018]	--	12	13	[.514]	UNPL	58	0.12	[.005]	05102 4-192046-2	OBSOLETE
A	[.57]	--	--	12	12.7	[.500]	1-2	57	0.20	[.008]	05182 4-192046-1	OBSOLETE
A	[.68]	[.016]	--	13	12.7	[.500]	UNPL	57	0.12	[.005]	05176 4-192046-0	OBSOLETE
A	[.68]	[.018]	--	12	12.7	[.500]	1-2	57	0.12	[.005]	05143 3-192046-9	OBSOLETE
											05184 3-192046-8	OBSOLETE
A	[.68]	[.018]	--	12	12.7	[.499]	4-2	56	0.15	[.006]	05144 3-192046-7	OBSOLETE
A	[.64]	[.022]	--	14	12.4	[.490]	1-2	56	0.12	[.005]	05135 3-192046-6	OBSOLETE
A	[.64]	[.022]	--	14	12.4	[.490]	UNPL	56	0.12	[.005]	05138 3-192046-5	OBSOLETE
--	[.64]	[.022]	--	14	12.4	[.490]	1-2	56	0.10	[.004]	05148 3-192046-4	OBSOLETE
A	[.64]	[.022]	--	14	12.4	[.490]	UNPL	56	0.10	[.004]	05151 3-192046-3	OBSOLETE
--	[.55]	[.018]	--	12	12.3	[.486]	UNPL	56	0.12	[.005]	05099 3-192046-2	OBSOLETE
A	[.50]	[.022]	--	13	11.6	[.458]	UNPL	51	0.12	[.005]	05145 3-192046-1	
A	[.44]	[.022]	--	12	10.2	[.400]	3-2	44	0.12	[.005]	05029 3-192046-0	
A	[.44]	[.022]	--	12	10.2	[.400]	UNPL	44	0.12	[.005]	05066 2-192046-9	OBSOLETE
A	[.42]	[.018]	--	12	9.5	[.375]	3-2	42	0.15	[.006]	05019 2-192046-8	OBSOLETE
A	--	--	--	12	9.5	[.375]	UNPL	42	0.15	[.006]	05032 2-192046-7	OBSOLETE
A	[.42]	--	--	13	9.5	[.375]	1-2	42	0.12	[.005]	05137 2-192046-6	OBSOLETE
A	[.38]	--	--	12	7.9	[.312]	6	36	0.15	[.006]	05133 2-192046-5	OBSOLETE
A	[.38]	--	--	12	7.9	[.312]	3-2	36	0.15	[.006]	05120 2-192046-4	OBSOLETE
A	[.34]	--	--	12	7.5	[.297]	3-2	34	0.15	[.006]	05122 2-192046-3	OBSOLETE
							--				2-192046-2	OBSOLETE
A	[.32]	[.018]	--	12	6.9	[.270]	1-2	31	0.12	[.005]	05077 2-192046-1	OBSOLETE
A	[.33]	[.018]	--	12	6.3	[.250]	6	28	0.15	[.006]	05040 2-192046-0	
A	[.33]	[.018]	--	12	6.3	[.250]	3-2	28	0.15	[.006]	05064 1-192046-9	
SUPERSEDED BY 9-192046-4											05054 1-192046-8	SUPERSEDED BY 9-192046-4
A	[.33]	[.018]	--	12	6.3	[.250]	UNPL	28	0.15	[.006]	05038 1-192046-7	OBSOLETE
A	[.27]	[.018]	--	12	5.7	[.225]	4-2	25	0.15	[.006]	05051 1-192046-6	
A	[.27]	[.018]	--	12	5.7	[.225]	1-2	25	0.15	[.006]	05163 1-192046-5	OBSOLETE
A	[.27]	[.018]	--	12	5.7	[.225]	UNPL	25	0.15	[.006]	05046 1-192046-4	OBSOLETE
A	[.34]	[.022]	--	14	5.1	[.200]	3-2	24	0.12	[.005]	05157 1-192046-3	OBSOLETE
A	[.34]	[.022]	--	14	5.1	[.200]	UNPL	24	0.12	[.005]	05156 1-192046-2	OBSOLETE
A	[.24]	[.018]	--	12	5	[.197]	1-2	22	0.15	[.006]	05147 1-192046-1	OBSOLETE
A	[.24]	[.018]	--	12	5	[.197]	UNPL	22	0.15	[.006]	05146 1-192046-0	OBSOLETE
A	[.23]	[.018]	--	12	4.7	[.187]	3-2	21	0.15	[.006]	05050 192046-9	OBSOLETE
A	[.23]	[.018]	--	12	4.7	[.187]	1-2	21	0.15	[.006]	05103 192046-8	OBSOLETE
A	[.23]	[.022]	--	12	4.7	[.187]	3-2	21	0.12	[.005]	05016 192046-7	OBSOLETE
A	[.22]	[.018]	--	12	4.4	[.172]	3-2	20	0.15	[.006]	05015 192046-6	
A	[.22]	[.018]	--	12	4.4	[.172]	1-2	20	0.15	[.006]	05162 192046-5	OBSOLETE
A	[.22]	[.018]	--	12	4.4	[.172]	UNPL	20	0.15	[.006]	05155 192046-4	OBSOLETE
A	[.19]	[.018]	--	12	4.1	[.160]	5-2	18	0.10	[.004]	05114 192046-3	OBSOLETE
A	[.19]	[.018]	--	12	4.1	[.160]	UNPL	18	0.10	[.004]	05113 192046-2	OBSOLETE
A	[.19]	[.018]	--	12	4	[.157]	4-2	18	0.15	[.006]	05134 192046-1	OBSOLETE

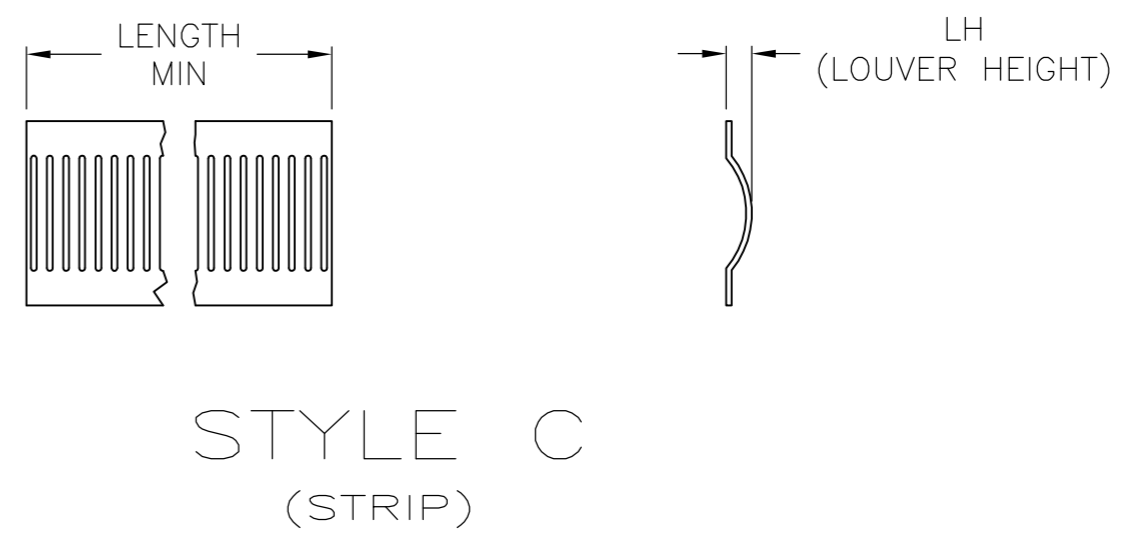
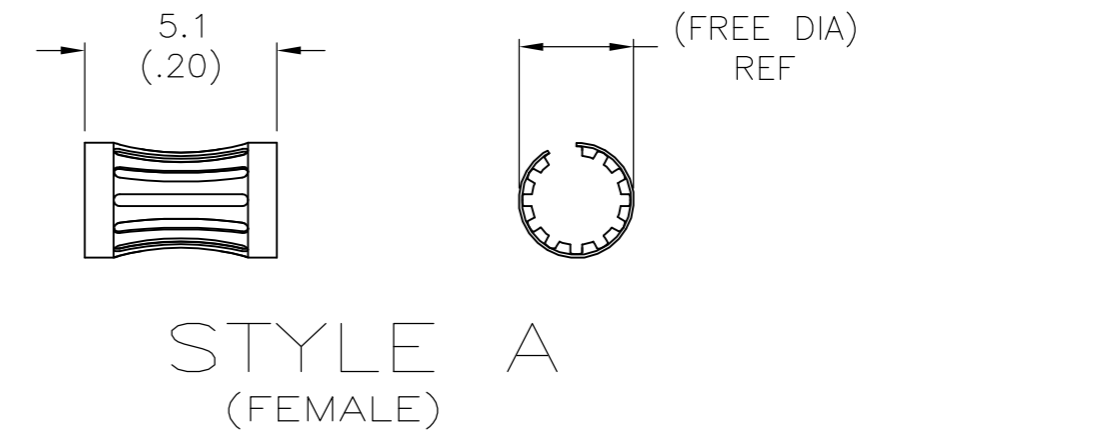
- FINISH: SILVER PLATE 200uIN THICK MIN.
 - FINISH: NICKEL PLATE 40uIN THICK MIN.
 - FINISH: GOLD PLATE 10uIN THICK MIN.
 - FINISH: GOLD PLATE 50uIN THICK MIN.
 - FINISH: GOLD PLATE 20uIN THICK MIN.
 - FINISH: TIN PLATE 300uIN THICK MIN.
 -
 - FINISH: GOLD PLATE 30uIN THICK MIN.
 -
 -
 - PLATING NOTES ARE TO BE INTERPRETED AS FOLLOWS 6-8 AS 6 OVER 8.
 - MATERIAL: CDA17200, BeCu.
 - MATERIAL: STAINLESS STEEL
 - MATERIAL: CDA17410, BeCu.
 - FINISH: HARD GOLD OVER NICKEL PLATE.
- △ OBSOLETE PARTS: OBSOLETE CIS STREAMLINING PER D.RENAUD/D.SINISI

THIS DRAWING IS A CONTROLLED DOCUMENT.		DWN	-	TE Connectivity	
DIMENSIONS: mm		CHK	J.TURNER 08-04-93		
TOLERANCES UNLESS OTHERWISE SPECIFIED:		APVD	-	NAME	
0 PLC ± -		PRODUCT SPEC	-	CONTACT BAND,FEMALE	
1 PLC ± -		APPLICATION SPEC	-	SIZE	A2
2 PLC ± 0.5 [.02]		WEIGHT	-	CAGE CODE	00779
3 PLC ± 0.25 [.010]		RESTRICTED TO	-	DRAWING NO	C=192046
4 PLC ± -		CUSTOMER DRAWING	-	SCALE	1:1
ANGLES ± -		SHEET	1 OF 2	REV	U

THIS DRAWING IS UNPUBLISHED. RELEASED FOR PUBLICATION
 © COPYRIGHT - By - ALL RIGHTS RESERVED.

LOC	DIST	REVISIONS					
FT	0	P	LTR	DESCRIPTION	DATE	DWN	APVD
		-	-	SEE SHEET 1	-	-	-

A	[.34]	[.022]	--	12	5.1[.200]	3-2	24	0.12[.005]	--	9-192046-9	OBSOLETE
A	[.19]	[.022]	--	12	3.4[.134]	UNPL	15	0.15[.006]	--	9-192046-8	OBSOLETE
A	[.19]	[.022]	--	12	3.4[.134]	8-2	16	0.15[.006]	--	9-192046-7	OBSOLETE
A	[.19]	[.022]	--	12	3.4[.134]	8-2	16	0.15[.006]	--	9-192046-6	OBSOLETE
A	[.19]	[.022]	--	12	3.4[.134]	UNPL	15	0.15[.006]	--	9-192046-5	OBSOLETE
A	[.35]	[.018]	--	12	6[.236]	1-2	27	0.15[.006]	--	9-192046-4	OBSOLETE
A	[.45]	[.018]	--	12	9[.354]	1-2	40	0.15[.006]	--	9-192046-3	OBSOLETE
A	[.19]	[.018]	--	12	3.17[.125]	1-2	15	0.15[.006]	--	9-192046-2	OBSOLETE
A	[.12]	[.018]	--	12	1.9[.075]	15	10	0.08[.003]	--	9-192046-1	OBSOLETE
A	[.12]	[.018]	--	12	1.9[.075]	UNPL	10	0.08[.003]	--	9-192046-0	OBSOLETE
A	[.32]	[.022]	--	12	5.7[.225]	UNPL	25	0.15[.006]	--	8-192046-9	
A	[.21]	[.022]	--	12	5.4[.211]	UNPL	19	0.12[.005]	--	8-192046-8	
A	[1.66]	[.022]	--	12	38.1[1.500]	UNPL	168	0.15[.006]	--	8-192046-7	
A	[1.10]	[.018]	--	12	23.7[.934]	UNPL	105	0.12[.005]	--	8-192046-6	
A	[.73]	[.016]	--	13	15.9[.625]	UNPL	71	0.12[.005]	--	8-192046-5	OBSOLETE
A	[.73]	[.018]	--	12	15.9[.625]	UNPL	71	0.12[.005]	--	8-192046-4	
A	[.73]	[.018]	--	12	14.8[.584]	UNPL	65	0.15[.006]	--	8-192046-3	
A	[.68]	[.018]	--	12	12.7[.500]	UNPL	57	0.12[.005]	--	8-192046-2	
A	[.68]	[.018]	--	12	12.7[.500]	UNPL	56	0.15[.006]	--	8-192046-1	OBSOLETE
--	--	--	--	--	--	--	--	--	--	8-192046-0	
A	[.32]	[.018]	--	12	6.9[.270]	UNPL	31	0.12[.005]	--	7-192046-9	
A	[.23]	[.018]	--	12	4.7[.187]	UNPL	21	0.15[.006]	--	7-192046-8	
A	[.19]	[.018]	--	12	4.5[.157]	UNPL	18	0.15[.006]	05189	7-192046-7	
--	--	--	--	--	--	--	--	--	--	7-192046-6	
A	[.45]	[.018]	--	12	9[.354]	1-2	40	0.20[.008]	--	7-192046-5	
A	[.45]	[.018]	--	12	9[.354]	UNPL	40	0.20[.008]	--	7-192046-4	
A	[.16]	[.018]	--	12	3[.118]	1-2	14	0.20[.008]	--	7-192046-3	
A	[.16]	[.018]	--	12	3[.118]	UNPL	14	0.20[.008]	--	7-192046-2	
SUPERSEDED BY 9-192046-3											
A	[.45]	[.018]	--	12	9[.354]	UNPL	40	0.15[.006]	--	7-192046-0	
A	[.16]	[.018]	--	12	3[.118]	1-2	14	0.15[.006]	--	6-192046-9	
A	[.16]	[.018]	--	12	3[.118]	UNPL	14	0.15[.006]	--	6-192046-8	
A	[.45]	[.018]	--	12	9[.354]	1-2	40	0.12[.005]	--	6-192046-7	
A	[.45]	[.018]	--	12	9[.354]	UNPL	40	0.12[.005]	--	6-192046-6	
A	[.16]	[.018]	--	12	3[.118]	1-2	14	0.12[.005]	--	6-192046-5	
A	[.16]	[.018]	--	12	3[.118]	UNPL	14	0.12[.005]	--	6-192046-4	
A	[.32]	[.022]	--	12	5.7[.225]	4-2	25	0.15[.006]	--	6-192046-3	OBSOLETE
A	[.21]	[.022]	--	12	5.4[.211]	1-2	19	0.12[.005]	--	6-192046-2	OBSOLETE
SUPERSEDED BY 6-192044-0											
A	[.18]	[.022]	--	12	3.4[.134]	UNPL	16	0.20[.008]	--	6-192046-0	OBSOLETE
A	[.19]	[.022]	--	12	3.4[.134]	4-2	16	0.15[.006]	--	5-192046-9	
A	[.19]	[.022]	--	12	3.4[.134]	UNPL	16	0.15[.006]	--	5-192046-8	OBSOLETE
A	--	[.022]	--	12	110.2[4.340]	1-2	--	0.12[.005]	05088	5-192046-7	OBSOLETE
A	--	[.022]	--	12	91.4[3.600]	3-2	--	0.15[.006]	05067	5-192046-6	OBSOLETE
A	[1.66]	[.022]	--	12	38.1[1.500]	3-2	168	0.15[.006]	05045	5-192046-5	OBSOLETE
A	[1.10]	[.018]	--	12	23.7[.934]	1-2	105	0.12[.005]	05078	5-192046-4	OBSOLETE
A	[1.10]	[.022]	--	12	22.7[.895]	UNPL	102	0.12[.005]	05082	5-192046-3	OBSOLETE
A	[1.20]	[.022]	--	12	20[.788]	UNPL	89	0.12[.005]	05129	5-192046-2	OBSOLETE
									05081	5-192046-1	OBSOLETE



THIS DRAWING IS A CONTROLLED DOCUMENT.

DWN -
CHK J.TURNER 08-04-93
APVD -

TE Connectivity

NAME CONTACT BAND,FEMALE

PRODUCT SPEC -
APPLICATION SPEC -

SIZE A2 CAGE CODE 00779 DRAWING NO C=192046 RESTRICTED TO -

MATERIAL - FINISH - WEIGHT -

CUSTOMER DRAWING SCALE 1:1 SHEET 2 OF 2 REV U